



AVANTHI INSTITUTE OF ENGINEERING AND TECHNOLOGY

(Approved by AICTE, Regd. By Govt. of T.S & Affiliated to JNTUH, Hyderabad)

NAAC “B++” Accredited Institute

Gunthapally (V), Abdullapurmet(M), RR Dist, Near Ramoji Film City, Hyderabad -501512.

www.aietg.ac.in email:principal.avanthi@gmail.com

7.1.2 The Institution has facilities and initiatives for

1. Alternate sources of energy and energy conservation measures

2. Management of the various types of degradable and non degradable Waste
3. Water conservation
4. Green campus initiatives
5. Disabled-friendly, barrier free environment

INDEX

1. Alternate sources of energy and energy conservation measures

| S NO. | PARTICULARS | PAGE NO. |
|-------|--------------------------------|----------|
| 1 | SOLAR ENERGY REPORT | 2 |
| 2 | WHEELING TO GRID | 7 |
| 3 | USE OF LED LAMPS | 8 |
| 4 | OUTCOME OF ENERGY CONSERVATION | 13 |
| 5 | TSSPDCL BILLS | 15 |


PRINCIPAL
Avanthi Institute of Engg. & Tech
Gunthapally (V), Abdullapurmet #14th R.R. Dist



AVANTHI INSTITUTE OF ENGINEERING AND TECHNOLOGY

(Approved by AICTE, Regd. By Govt. of T.S& Affiliated to JNTUH, Hyderabad)

NAAC "B++" Accredited Institute

Gunthapally (V), Abdullapurmet(M), RR Dist, Near Ramoji Film City, Hyderabad -501512.

www.aietg.ac.in email:principal.avanthi@gmail.com

1. SOLAR ENERGY REPORT:

Solar energy is the most feasible and viable green energy available around the globe. Its viability is very high in tropical countries like INDIA. In our institution Avanthi Institute of Engineering and Technology, we installed solar panels on top of the roofs that consist the capacity of 120 KW in the month of June- 2018.

Solar power for educational institutes is advanced ideology that helps to reduce the costs associated with providing electricity to the college. The entire units produced by power plant with the off shore Training of Approximately 8 hours is 328 Average Units per day Moreover, solar power generates 100% clean and renewable energy of multi unit in our educational institutions, the spacious roofs and open spaces are flooded with sunlight for most of the day which is suitable for installation of PV system for energy and its benefits. Major power requirement in an educational institute is used for lighting as it includes lamps, fans, computers etc. We use power equipments in our institute such as air-conditioners, projectors, heaters etc. As in wiring system separate wiring path is provided for light and power circuit, for easy equipment of light circuit with solar power system. 54.96% of solar energy is saveable when compared to electricity power but generally, during the months from February to July, as we have excess of solar energy of maximum 42⁰C, the solar power panels are highly efficient to observe the energy needed for further utilization purpose. Because of climate changes and some effective modulations in solar panels, sometimes the consumption of solar power is average 150 units.

Name of Panels in Different Blocks:

| Name of the block | Power generated in WATTS | KWH Rating generated | Total Number of plates |
|-------------------|--------------------------|----------------------|------------------------|
| Block-1 | 60,000 W | 60 KWH | 372 PLATES |
| Block-2 | 60,000 W | 60 KWH | 372 PLATES |



PRINCIPAL

Avanthi Institute of Engg. & Tech

Gunthapally (V), Abdullapurmet (Mdl) R.R. Dist

Avanthi Institute of Engineering and Technology



AVANTHI INSTITUTE OF ENGINEERING AND TECHNOLOGY

(Approved by AICTE, Recg. By Govt. of T.S& Affiliated to JNTUH, Hyderabad)

NAAC "B++" Accredited Institute

Gunthapally (V), Abdullapurmet(M), RR Dist, Near Ramoji Film City, Hyderabad -501512.

www.aietg.ac.in email:principal.avanthi@gmail.com

| | |
|--|----------------------------------|
| Total Capacity of solar power plant bearing in institution | : 120 KWp |
| Each solar panel produces 0.325 units of energy | : $372 \times 0.325 = 120$ UNITS |
| (DC) Work order value for BUDDING LEAF solar plant | : Rs 1,10,00,000/- |
| Subsidy cheque received from Government of TS | : Rs 35,70,000/- |
| Daily production of units in an average | : 328 Units |
| Monthly production of units in an average | : 9851 Units |
| Annual production of units in an average | : 118211 Units |
| Solar Power Generation par day from 6:00 AM To 6:00PM | : 54.96% |
| Approx Annual Requirements of units in an average | : 215097 Units |

| Year wise production of units | Average Daily production of units | Monthly production of units | Annual production of units | Approx Annual requirement of units | Average % of Power Savings |
|-------------------------------|-----------------------------------|-----------------------------|----------------------------|------------------------------------|----------------------------|
| 2022-2023 | 328 | 9851 | 118211 | 215097 | 54.96 |
| 2021-2022 | 313 | 9390 | 112680 | 213024 | 51.82 |
| 2020-2021 | 291 | 8930 | 104760 | 2021097 | 56.24 |
| 2019-2020 | 322 | 9660 | 115920 | 216021 | 53.81 |
| 2018-2019 | 319 | 9570 | 114840 | 228035 | 52.12 |

PRINCIPAL

Avanthi Institute of Engg. & Tech
Gunthapally (V), Abdullapurmet (Mdl), R.R. Dist.



AVANTHI INSTITUTE OF ENGINEERING AND TECHNOLOGY

(Approved by AICTE, Regd. By Govt. of T.S& Affiliated to JNTUH, Hyderabad)

NAAC "B++" Accredited Institute

Gunthapally (V), Abdullapurmet(M), RR Dist, Near Ramoji Film City, Hyderabad -501512.

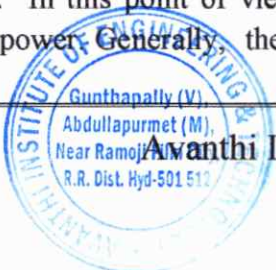
www.aietg.ac.in email:principal.avanthi@gmail.com

Energy consumption (2022-2023):

Table: Last 12 month's electricity unit consumption and utilization from solar and TSSPDCL

| Month-Year | Units consumed from TSSPDCL (KWh) | Units consumed by Solar Plant (KWh) | Units export to TSSPDCL (KWh) | Total Units generated by solar (KWh) | Total Units Consumed by college (KWh) | Monthly % of Power Savings |
|-----------------|-----------------------------------|-------------------------------------|-------------------------------|--------------------------------------|---------------------------------------|----------------------------|
| July-2022 | 12179 | 9640 | 1928 | 11568 | 21819 | 53.02 |
| August -2022 | 13416 | 9235 | 2060 | 11295 | 22651 | 49.87 |
| September -2022 | 12944 | 7530 | 4080 | 11610 | 20474 | 56.71 |
| October-2022 | 11134 | 4256 | 4594 | 8850 | 15390 | 57.50 |
| November-2022 | 9953 | 2952 | 5480 | 8432 | 12905 | 65.34 |
| December -2022 | 11125 | 4125 | 4127 | 8252 | 15250 | 54.11 |
| January-2023 | 10393 | 2856 | 5345 | 8201 | 13249 | 61.90 |
| February-2023 | 11853 | 1852 | 5993 | 7845 | 13705 | 57.24 |
| March-2023 | 6873 | 5681 | 1292 | 6973 | 12554 | 55.54 |
| April-2023 | 15099 | 9352 | 2093 | 11445 | 24451 | 46.81 |
| May-2023 | 11293 | 7754 | 3906 | 11660 | 19047 | 61.22 |
| June-2023 | 14018 | 9584 | 2496 | 12080 | 23602 | 51.18 |
| TOTAL | 140280 | 74817 | 43394 | 118211 | 215097 | 54.96% |
| Average | 11690 | 6234.75 | 3616.167 | 9850.917 | 17924.75 | |

Regarding the energy consumption of the year 2022-2023, from the above mentioned table, we find a variation of units which are consumed based upon the climatic conditions. In this point of view, 54.96% of solar energy is savable when compared to electricity power. Generally, the maximum generation of solar energy is more than 4000KWh



Avanthi Institute of Engineering and Technology

PRINCIPAL

Avanthi Institute of Engg. & Tech
Gunthapally (V), Abdullapurmet (M) R.R. Dist



AVANTHI INSTITUTE OF ENGINEERING AND TECHNOLOGY

(Approved by AICTE, Regd. By Govt. of T.S& Affiliated to JNTUH, Hyderabad)

NAAC "B++" Accredited Institute

Gunthapally (V), Abdullapurmet(M), RR Dist, Near Ramoji Film City, Hyderabad -501512.

www.aietg.ac.in email:principal.avanthi@gmail.com

and minimum is 2500KWh, but during the months from February to July, as we have excess of solar energy of maximum 42°C, the solar power panels are highly efficient to observe the energy needed for further utilization purpose.



Installed solar panels on top of the Main BLOCK-I that consist the capacity of 60 KW



Avanthi Institute of Engineering and Technology

PRINCIPAL
Avanthi Institute of Engg. & Tech
Gunthapally (V), Abdullapurmet (M) R.R. Dist



AVANTHI INSTITUTE OF ENGINEERING AND TECHNOLOGY

(Approved by AICTE, Reg. By Govt. of T.S& Affiliated to JNTUH, Hyderabad)

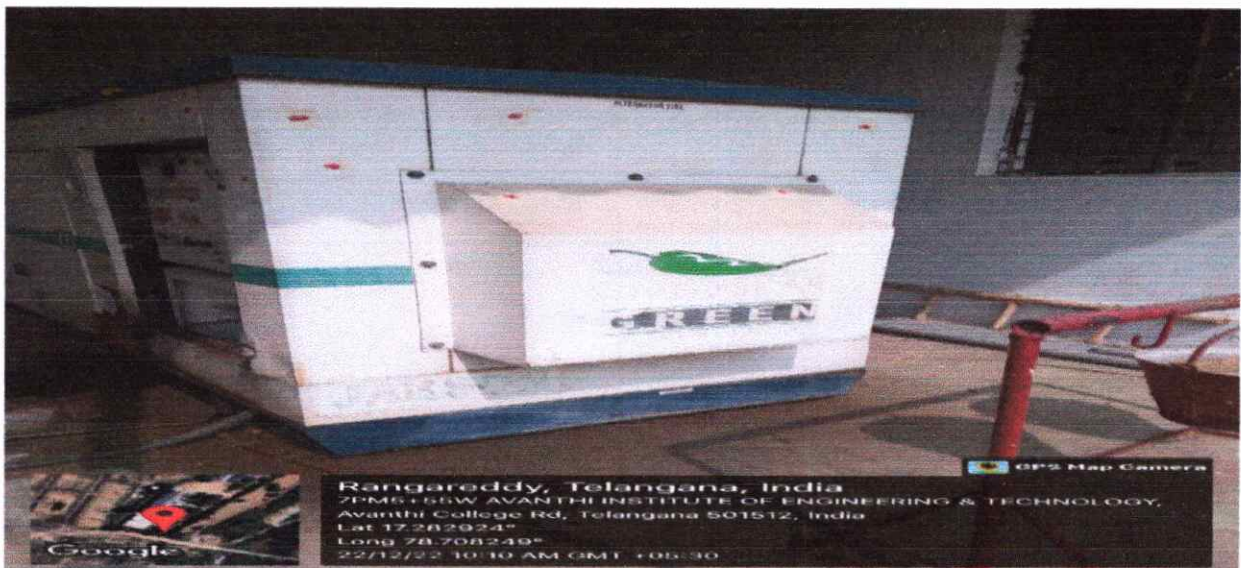
NAAC "B++" Accredited Institute

Gunthapally (V), Abdullapurmet(M), RR Dist, Near Ramoji Film City, Hyderabad -501512.

www.aietg.ac.in email:principal.avanthi@gmail.com



Installed solar panels on top of the EEE, BLOCK-II that consist the capacity of 60 KW



DG-SET 65KVA



Avanthi Institute of Engineering and Technology

PRINCIPAL
[Signature]
Avanthi Institute of Engg. & Tech
Gunthapally (V), Abdullapurmet (M), Near Ramoji Film City, R.R. Dist. Hyd-501 512



AVANTHI INSTITUTE OF ENGINEERING AND TECHNOLOGY

(Approved by AICTE, Reg. By Govt. of T.S& Affiliated to JNTUH, Hyderabad)

NAAC "B++" Accredited Institute

Gunthapally (V), Abdullapurmet(M), RR Dist, Near Ramoji Film City, Hyderabad -501512.

www.aietg.ac.in email:principal.avanthi@gmail.com

2. WHEELING TO THE GRID: SOURCE OF ELECTRIC POWER

- Telangana State Southern Power Distribution Corporation Limited (TSSPDCL) which supplies power through one Transformer 150 KVA.
- Apart from this some amount of energy is demand is met by rooftop solar power plant with the installed capacity of 120 KW. It is connected to power grid through the 120 KVA transformer in the net metering system.
- The whole system is supported by one diesel generators of ratings with 65 KVA, as a backup. Solar energy is the most feasible and viable green energy available around the globe. Its viability is very high in the tropical countries in India



BLOCK-I Solar plant connected to power grid



PRINCIPAL
Avanthi Institute of Engg. & Tech
Gunthapally (V), Abdullapurmet (M),
Near Ramoji Film City, R.R. Dist. Hyd-501 512

Avanthi Institute of Engineering and Technology



AVANTHI INSTITUTE OF ENGINEERING AND TECHNOLOGY

(Approved by AICTE, Regg. By Govt. of T.S& Affiliated to JNTUH, Hyderabad)

NAAC "B++" Accredited Institute

Gunthapally (V), Abdullapurmet(M), RR Dist, Near Ramoji Film City, Hyderabad -501512.

www.aietg.ac.in email:principal.avanthi@gmail.com



BLOCK-II Solar plant connected to power grid

3. USE OF LED LAMPS:

In Avanti Institute of Engineering and Technology we have incorporated use of LED lamps to reduce energy consumption and improve efficiency. LED lamps are installed in seminar halls, classrooms and cafeteria.

a. LED lamps are energized by solar energy as well as utility grid from Telangana State Southern Power Distribution Corporation Limited (TSSPDCL). A part from the utilization of renewable resource as an energy for the partial fulfillment of the energy needs of the institute we have also initiated the utilization of LED BULBS in various department classrooms as well as seminar halls for better energy saving .

b. We have installed around 506 LED bulbs stating the capacity of around 20W to



Avanthi Institute of Engineering and Technology

PRINCIPAL

Avanthi Institute of Engg. & Tech



AVANTHI INSTITUTE OF ENGINEERING AND TECHNOLOGY

(Approved by AICTE, Regg. By Govt. of T.S& Affiliated to JNTUH, Hyderabad)

NAAC "B++" Accredited Institute

Gunthapally (V), Abdullapurmet(M), RR Dist, Near Ramoji Film City, Hyderabad -501512.

www.aietg.ac.in email:principal.avanathi@gmail.com

Illuminate the class rooms, corridors, labs, seminar halls, auditorium, principal office ,E-class rooms, conference hall provided.

c. For this academic year we have also made our college students from the branches of electrical and information technology to develop a programming with the interface of an IOT device which controls an entire room with statement of sound as well as through the development of infrared modules which sense the arrival of individual .

d. On further sensing the entire room illuminated gets with electricity in the presence of person. Under the absence of individual the room shuts of the supply automatically.

e. By the installation of LED in our campus at various places where the power consumption is adequate we have saved up to 54.96 % of energy in total consumption .

f. The LED utilized here are bearing the capacity of around 20W of different multinational companies like Crompton.

g. The LED lamps beings highly illuminative and efficient they can be used to lighten wide range of areas like auditorium , cafeteria , class rooms , corridors with less cost being more economical.

h. For the future scope we are developing and planning to install more sensor based LED along with inverter LED lamps which can be operated as well as without electricity.

i. The idea behind the installing this LED lamps are mainly due to the following criteria like Effective energy saving, cost factor and rate of illumination .

External Lighting:

List of LED Lights used for External Lightings

| S.NO | Description | Count of LED Bulbs |
|------|---------------------------------|--------------------|
| 1 | 40W LED Lights at the Main Gate | 2 |
| 2 | 20W Tube Lights at EEE Block | 4 |
| 3 | 40W - Street Lights - Ground | 16 |



Avanthi Institute of Engineering and Technology

PRINCIPAL
Avanthi Institute of Engg. & Tech
Gunthapally (V), Abdullapurmet (M), R.R. Dist



AVANTHI INSTITUTE OF ENGINEERING AND TECHNOLOGY

(Approved by AICTE, Regg. By Govt. of T.S& Affiliated to JNTUH, Hyderabad)

NAAC "B++" Accredited Institute

Gunthapally (V), Abdullapurmet(M), RR Dist, Near Ramoji Film City, Hyderabad -501512.

www.aietg.ac.in email:principal.avanthi@gmail.com

External Lighting:

List of LED Lights used for Internal Lightings

| S.NO | Description | Count of LED Bulbs |
|------|-------------------------------------|--------------------|
| 1 | Seminar Hall lighting - 20W | 2 |
| 2 | Principal Office-15W | 4 |
| 3 | Auditorium-20W | 25 |
| 4 | 'Conference 'hall, Placement cell | 2 |
| 5 | E-class rooms Main block, EEE block | 6 |
| 6 | Director office, Account section | 2 |
| 7 | Administrative office | 2 |
| 8 | Class rooms, labs, corridors | 25 |

Ratio of lights and LED Lights:

| | Tube Lights | LED Lights |
|--|-------------|------------|
| No.of bulbs | 11 | 506 |
| Watt per bulbs | 40W | 20W |
| KWh energy consumed by the bulbs | 2.6KWh | 60.7KWh |
| KWh energy consumed by the month(assuming 6 working hours and 25 working days) | 66 KWh | 1518 KWh |
| Consumption of energy | 4.16% | 95.84% |




PRINCIPAL

Avanthi Institute of Engg & Tech

Gunthapally (V), Abdullapurmet (M), RR Dist, Hyderabad -501512

Avanthi Institute of Engineering and Technology



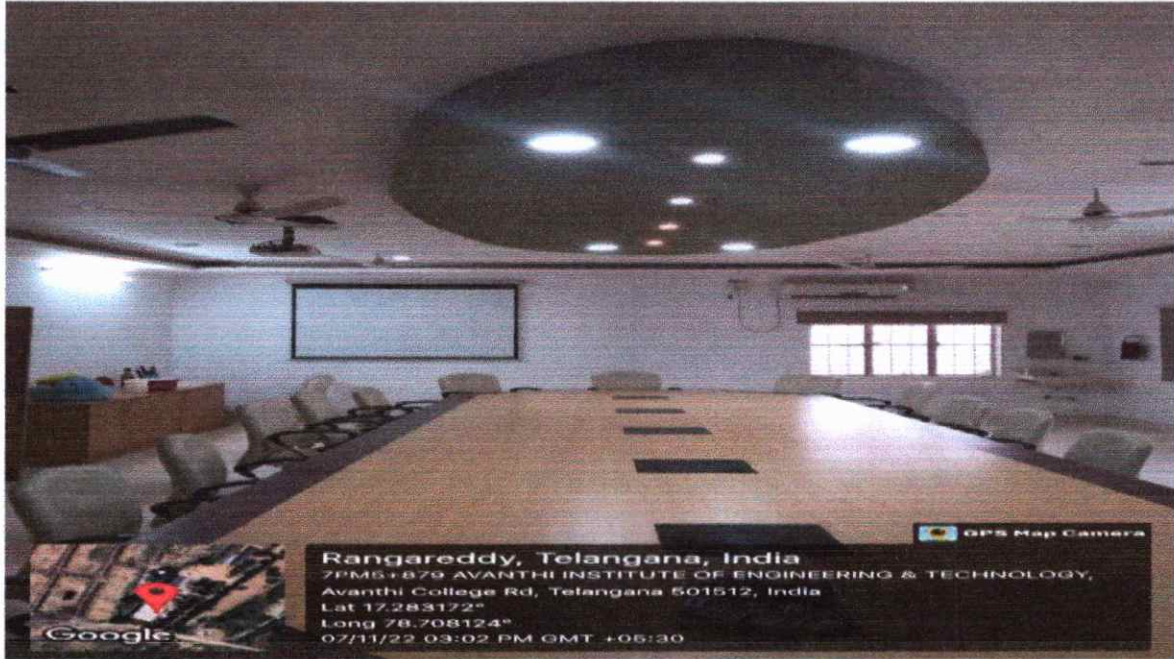
AVANTHI INSTITUTE OF ENGINEERING AND TECHNOLOGY

(Approved by AICTE, Regd. By Govt. of T.S& Affiliated to JNTUH, Hyderabad)

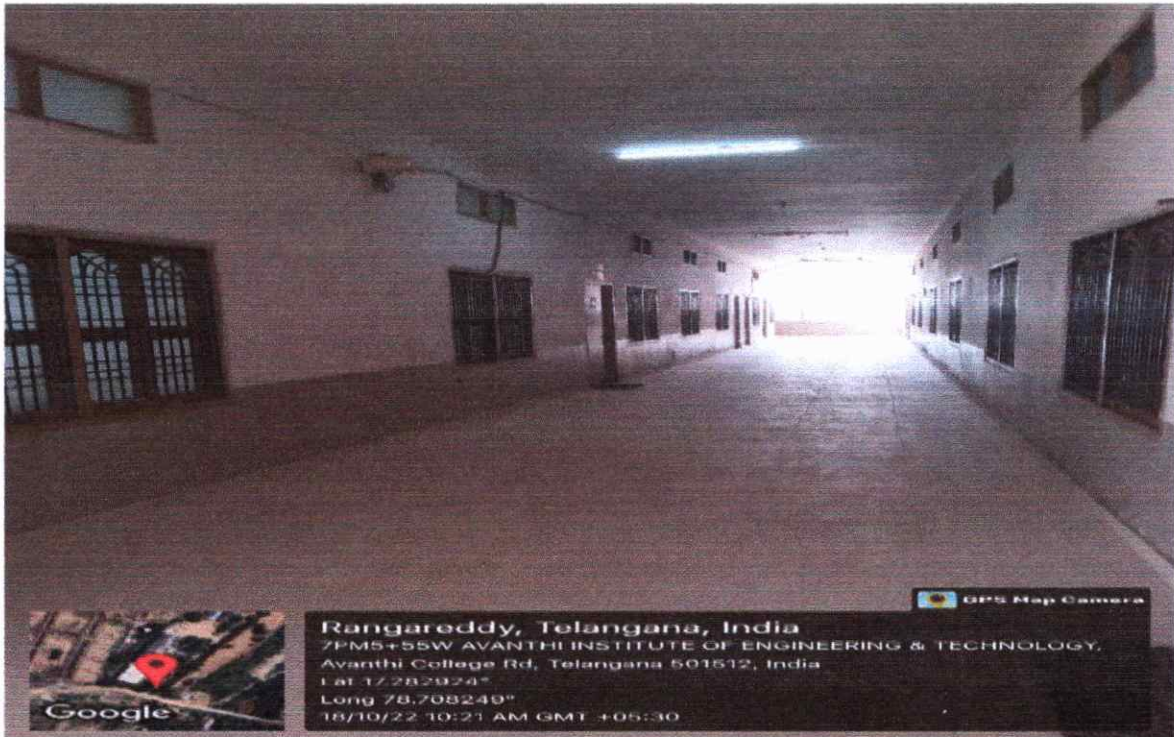
NAAC "B++" Accredited Institute

Gunthapally (V), Abdullapurmet(M), RR Dist, Near Ramoji Film City, Hyderabad -501512.

www.aietg.ac.in email:principal.avanthi@gmail.com



LED-Lamps Used in Conference Hall



LED-Lamps Used at corridor

[Signature]
PRINCIPAL

Avanthi Institute of Engg. & Tech

Avanthi Institute of Engineering and Technology





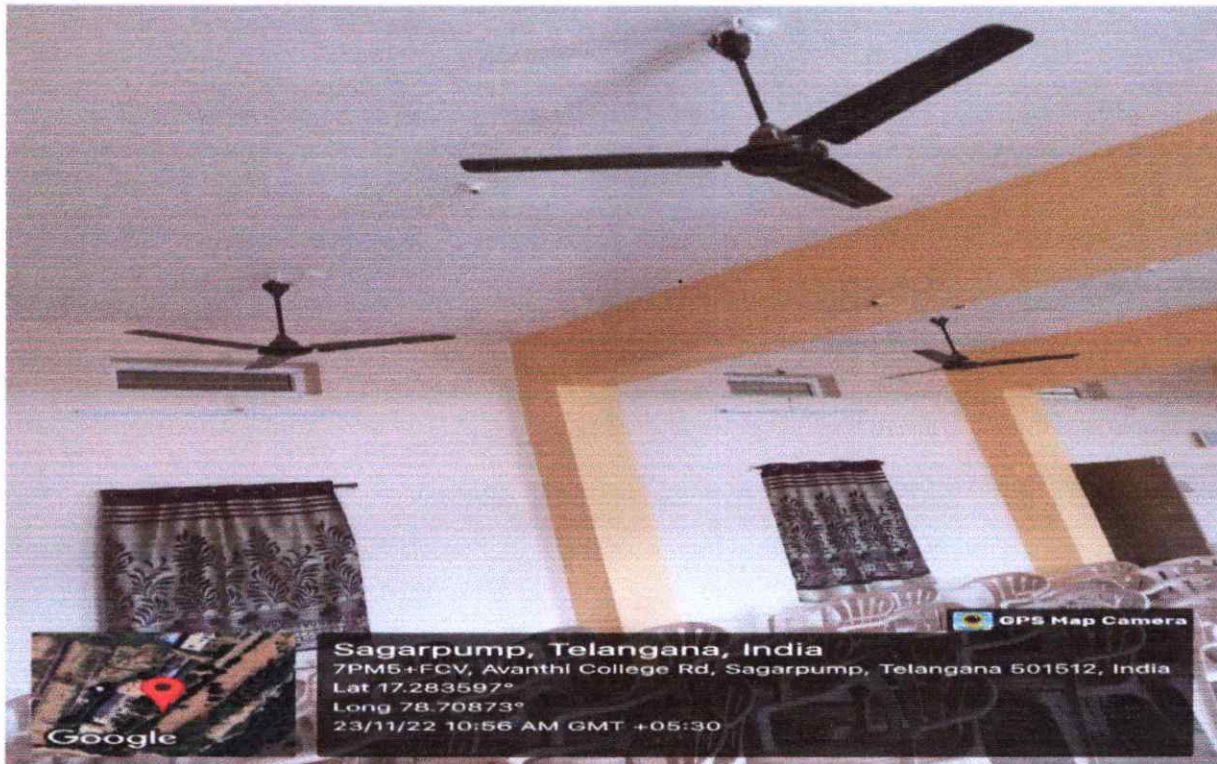
AVANTHI INSTITUTE OF ENGINEERING AND TECHNOLOGY

(Approved by AICTE, Recg. By Govt. of T.S& Affiliated to JNTUH, Hyderabad)

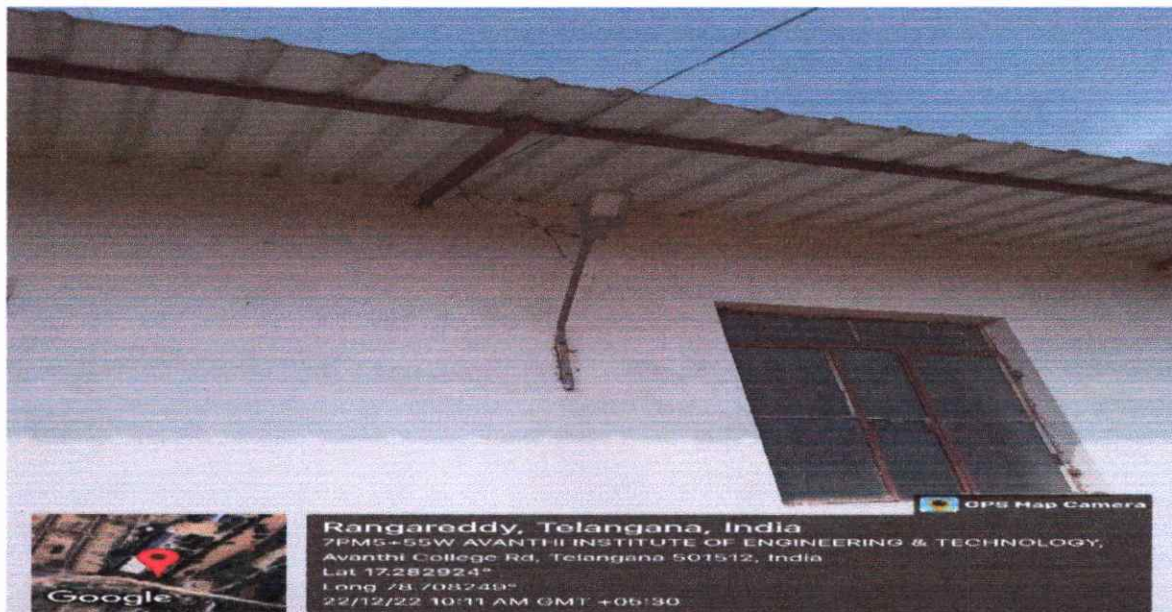
NAAC "B++" Accredited Institute

Gunthapally (V), Abdullapurmet(M), RR Dist, Near Ramoji Film City, Hyderabad -501512.

www.aietg.ac.in email:principal.avanthi@gmail.com



Back-up Energy using to all class Rooms



20W LED-Lamp Used at Mechanical Lab



[Signature]
PRINCIPAL

Avanthi Institute of Engineering and Technology
Avanthi Institute of Engg. & Tech
Gunthapally (V), Abdullapurmet (M) R.R. Dist



AVANTHI INSTITUTE OF ENGINEERING AND TECHNOLOGY

(Approved by AICTE, Reg. By Govt. of T.S& Affiliated to JNTUH, Hyderabad)

NAAC "B++" Accredited Institute

Gunthapally (V), Abdullapurmet(M), RR Dist, Near Ramoji Film City, Hyderabad -501512.

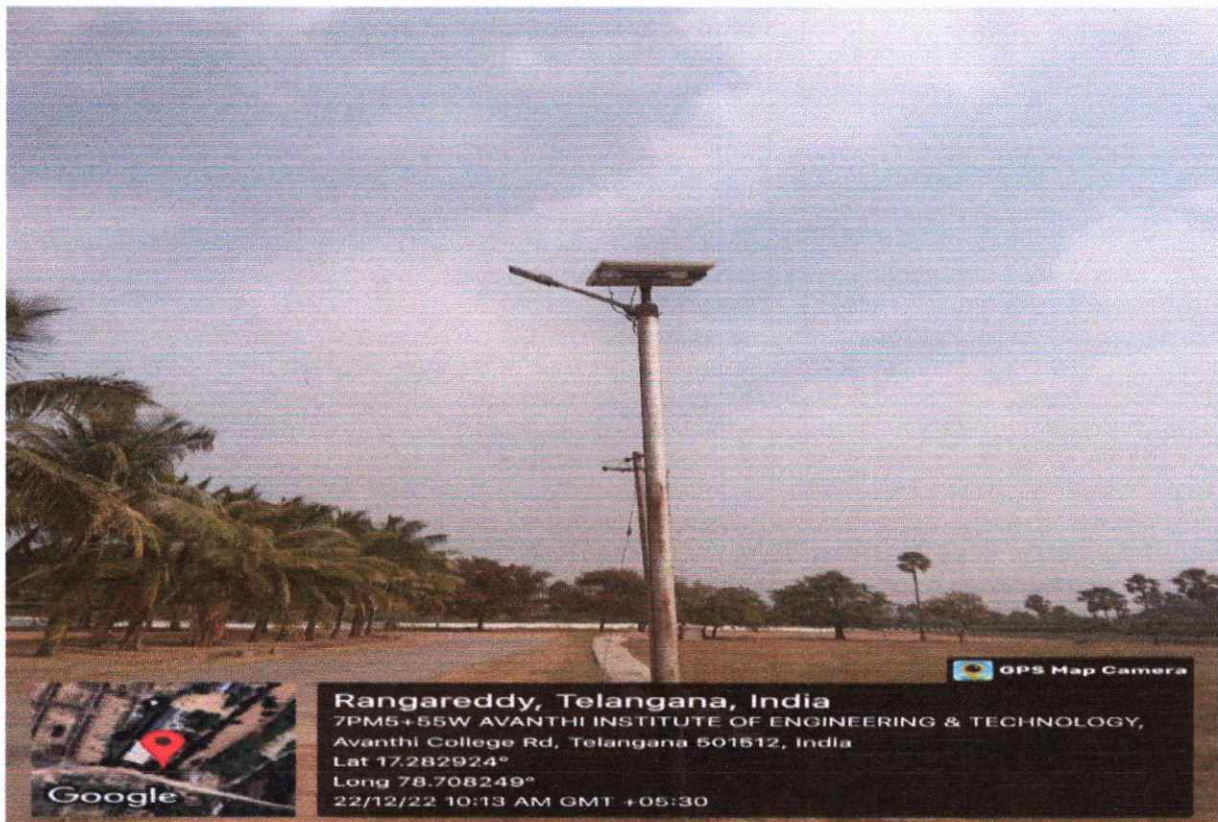
www.aietg.ac.in email:principal.avanthi@gmail.com

4. OUTCOME OF ENERGY CONSERVATION:

The conservation of energy come into picture with the proper utilization of sources may be renewable energy like solar. Solar panel are utilized where the energy is more consumed like street lights, seminar hall, cafeteria, etc....

In order to save more energy the usage of fluorescent lamps and CFL lamps are to reduced to great extent. The replacement of these lamp with proper and efficient LED lights can be helped for energy saving in all aspects.

In our campus we have installed LED lamps not only indoor campus but also in the outside premises like corridors and pedestrian path



Installed LED lamps in the outside premises like corridors and pedestrian path



Avanthi Institute of Engineering and Technology

[Handwritten Signature]
PRINCIPAL

Avanthi Institute of Engg. & Tech
Gunthapally (V), Abdullapurmet (M), R.R. Dist



AVANTHI INSTITUTE OF ENGINEERING AND TECHNOLOGY

(Approved by AICTE, Reg. By Govt. of T.S& Affiliated to JNTUH, Hyderabad)

NAAC "B++" Accredited Institute

Gunthapally (V), Abdullapurmet(M), RR Dist, Near Ramoji Film City, Hyderabad -501512.

www.aietg.ac.in email:principal.avanthi@gmail.com



Installed LED lamp in the outside premises like corridors



Back-up Power Used to Computer Labs



Avanthi Institute of Engineering and Technology

[Signature]
PRINCIPAL

Avanthi Institute of Engg. & Tech
Guntihapally (V), Abdullapurmet (Mdl), R.R. Dist

paid on 13/7/23
 AX12-122 AB
 [Signature]

SOUTHERN POWER DISTRIBUTION COMPANY OF TS LIMITED

H.T C.C. Bill for the Month of June 2023, Date: 01-Jul-23

PAYABLE ON OR BEFORE Dated : 15-Jul-23 DISCONNECTION
 DATE: 30-Jul-23

| | | | |
|------------------------|---------------------|-----------------|--------------------------------|
| Contracted MD (KVA/HP) | 150 | Consumer Number | SRN1242 |
| Specified Voltage(KV) | 11 | Name | M/S. AVANTHI EDUCATIONAL SOCIE |
| Actual Voltage(KV) | 11 | Address1 | SY.NO.230,GUNTAPALLY (V), |
| Feeder | 180123340204 (CF) | Address2 | PEDDA AMBERPET,HAYATHNAGAR(M), |
| Category | 2A | Address3 | R.R.DIST |

| DESCRIPTIONS | KWH | KVAH ✓ | KVA | TOD1 | TOD2 |
|-----------------------|-----------|---------------|-------|----------|----------|
| Reading On 30-JUN-23 | 290907.00 | 317939.00 | 32.92 | 57808.00 | 72928.00 |
| Reading On 01-JUN-23 | 284607.05 | 310930.05 | | 56965.20 | 71320.66 |
| Difference ST:01 | 6299.95 | 7008.95 | | 842.8 | 1607.34 |
| Multiplying Factor | 2 | 2 | 2 | 2 | 2 |
| Total Consumption | 12600 ✓ | 14018 ✓ units | 65.84 | 1686 | 3215 |
| Monthly Minimum Units | 3000 | | 120 | | |
| Main Consumption | 11522 | Colony | 0 | L&F | 0 |

| DESCRIPTIONS | RATE | KVA/UNITS | AMOUNT Rs. |
|-----------------------|-----------------------------|---------------------------------------|-----------------|
| Demand Charges Normal | Rs. 475 | 120 x 475/- Min. = | 57000.00 |
| Demand Charges Penal | Rs. 950 | 0 | 0.00 |
| Energy Charges | Ps. 880 8.80/- | 88 x 11522 - Resultant | 101393.60 ✓ |
| Incentive TOD1 | (FR: 93702 IR: 91480.2) | Time zone 2022 x 2 = Incentive Normal | -4444.00 ✓ |
| Incentive TOD2 | (FR: 31672 IR: 31000.1) | 072 x 2 = | -1344.00 ✓ |
| TOD Charges | Ps. 100 used on peak hours. | 4901 units x 1/- Peak | 4901.00 units ✓ |
| Electricity Duty | Ps. 6 | 11522 | 691.32/- ✓ |
| Colony Charges | Ps. 730 | 0 | 0.00 |
| L&F Charges | Ps. 880 | 0 | 0.00 |
| Green Energy Charges | Ps. 0 | 0 | 0.00 |
| FSA Charges | Ps. | | |

| Supplier Name | Net KWH | KVA | TOD |
|---------------|---------|-----|-----|
| | | | |

| Net Meter (KWH) Details | | |
|-------------------------|-----------------|----------------|
| Closing Reading | Opening Reading | Recorded Units |
| 131928 | 130680 | 2496 |

| Arrears as on 30/06/23 | | |
|------------------------|------------|----------------|
| | C.C.Charge | TCS on Arrears |
| Court Case Rs. | 0 | |
| Others Rs. | 0 | 0.00 |
| Total Rs. | 0 | |

Units exported to Grid
 14018
 - 2496

| | |
|------------------------------|-----------|
| Sub Total | 158197.92 |
| Customer Charges | 2000.00 |
| ACD Surcharge | 0.00 |
| UI Charges | 0.00 |
| Cross Subsidy Surcharge | 0.00 |
| Additional Surcharge on OA | 0.00 |
| RKVAH surcharge HYDEL | |
| RKVAH surcharge WIND | |
| Late Payment Charges | 0.00 |
| Interest on ED | 4.37 |
| Penal Interest | |
| Difference Voltage Surcharge | 0.00 |
| Wheeling Charges | 0.00 |
| Transmission Charges | 0.00 |
| Other Charges-I | 0.00 |
| Other Charges-II | 0.00 |
| Gross Total | 160202.00 |
| Inc. Rec. from Govt. | 0.00 |
| IT TCS U/s 206C(1H) | 0.00 |
| Net Bill Amount | 160202.00 |
| Total Arrears | 0.00 |
| Total Amount Payable | 160202.00 |

Amount in Words: One Lakh Sixty Thousand Two Hundred and Two Rupees Only.

Note: ACD Due for 2023-24 Rs. 0

Note: PAY YOUR BILL THROUGH THE SBI A/C NO. SPDCCLPSRN1242
 IFSC CODE: SBIN0004266

SOUTHERN POWER DISTRIBUTION COMPANY OF TS LIMITED

H.T C.C. Bill for the Month of May 2023,

Date: 01-Jun-23

PAYABLE ON OR BEFORE Dated : 15-Jun-23
Jun-23

DISCONNECTION DATE: 30-

paid on 30/6/23
Arus-123456
[Signature]

| | | | |
|------------------------|---------------------|-----------------|--------------------------------|
| Contracted MD (KVA/HP) | 150 | Consumer Number | SRN1242 |
| Specified Voltage(KV) | 11 | Name | M/S. AVANTHI EDUCATIONAL SOCIE |
| Actual Voltage(KV) | 11 | Address1 | SY.NO.230,GUNTAPALLY (V), |
| Feeder | 180123340204 (CF) | Address2 | PEDDA AMBERPET,HAYATHNAGAR(M), |
| Category | 2A | Address3 | R.R.DIST |

| DESCRIPTIONS | KWH | KVAH | KVA | TOD1 | TOD2 |
|-----------------------|-----------|-----------|-------|----------|----------|
| Reading On 31-MAY-23 | 284607.05 | 310930.05 | 30.02 | 56965.20 | 71320.66 |
| Reading On 01-MAY-23 | 279502.27 | 305283.63 | | 55831.31 | 70128.11 |
| Difference ST:01 | 5104.78 | 5646.42 | | 1133.89 | 1192.55 |
| Multipling Factor | 2 | 2 | 2 | 2 | 2 |
| Total Consumption | 10210 | 11293 | 60.04 | 2268 | 2385 |
| Monthly Minimum Units | 3000 | | 120 | | |
| Main Consumption | 7387 | Colony | 0 | L&F | 0 |

| DESCRIPTIONS | RATE | KVA/UNITS | AMOUNT Rs. |
|-----------------------|----------------------------|-----------|------------|
| Demand Charges Normal | Rs. 475 | 120 | 57000.00 |
| Demand Charges Penal | Rs. 950 | 0 | 0.00 |
| Energy Charges | Ps. 880 | 7387 | 65005.60 |
| Incentive TOD1 | (FR: 91480.2 IR: 89852.29) | | -3256.00 |
| Incentive TOD2 | (FR: 31000.1 IR: 30449.76) | | -1101.00 |
| TOD Charges | Ps. 100 | 4653 | 4653.00 |
| Electricity Duty | Ps. 6 | 7387 | 443.22 |
| Colony Charges | Ps. 730 | 0 | 0.00 |
| L&F Charges | Ps. 880 | 0 | 0.00 |
| Green Energy Charges | Ps. 0 | 0 | 0.00 |
| FSA Charges | Ps. | | |

| Supplier Name | Net KWH | KVA | TOD | Sub Total |
|---------------|---------|-----|-----|----------------------------|
| | | | | 122744.82 |
| | | | | Customer Charges |
| | | | | 2000.00 |
| | | | | ACD Surcharge |
| | | | | 0.00 |
| | | | | UI Charges |
| | | | | 0.00 |
| | | | | Cross Subsidy Surcharge |
| | | | | 0.00 |
| | | | | Additional Surcharge on OA |
| | | | | 0.00 |

| Net Meter (KWH) Details | | |
|-------------------------|-----------------|----------------|
| Closing Reading | Opening Reading | Recorded Units |
| 130680 | 128727 | 3906 |

Arrears as on 31/05/23

| | C.C.Charge | TCS on Arrears |
|----------------|------------|----------------|
| Court Case Rs. | 0 | |
| Others Rs. | 0 | 0.00 |
| Total Rs. | 0 | |

RKVAH surcharge HYDEL

RKVAH surcharge WIND

Late Payment Charges 0.00

Interest on ED 1.03

Penal Interest

Difference Voltage Surcharge 0.00

Wheeling Charges 0.00

Transmission Charges 0.00

Other Charges-I 0.00

Other Charges-II 0.00

Gross Total 124746.00

Inc. Rec. from Govt. 0.00

IT TCS U/s 206C(1H) 0.00

Net Bill Amount 124746.00

Total Arrears 0.00

Total Amount Payable 124746.00

Amount in Words: One Lakh Twenty Four Thousand Seven Hundred and Fourty Six Rupees Only.

Note: ACD Due for 2023-24 Rs. 0

Note: PAY YOUR BILL THROUGH THE SBI A/C NO. SPDCLPSRN1242
IFSC CODE: SBIN0004266

Paid on 30/6/23
Arrears - 1052.00
[Signature]

SOUTHERN POWER DISTRIBUTION COMPANY OF TS LIMITED

paid on 15/5/2023
April-23 He
WY

H.T C.C. Bill for the Month of April 2023,

Date: 01-May-23

**PAYABLE ON OR BEFORE Dated : 15-May-23
May-23**

DISCONNECTION DATE: 30-

| | | | |
|------------------------|---------------------|-----------------|--------------------------------|
| Contracted MD (KVA/HP) | 150 | Consumer Number | SRN1242 |
| Specified Voltage(KV) | 11 | Name | M/S. AVANTHI EDUCATIONAL SOCIE |
| Actual Voltage(KV) | 11 | Address1 | SY.NO.230,GUNTAPALLY (V), |
| Feeder | 180123340204 (CF) | Address2 | PEDDA AMBERPET,HAYATHNAGAR(M), |
| Category | 2 | Address3 | R.R.DIST |

| DESCRIPTIONS | KWH | KVAH | KVA | TOD1 | TOD2 |
|-----------------------|-----------|-----------|-------|----------|----------|
| Reading On 30-APR-23 | 279502.27 | 305283.63 | 35.44 | 55831.31 | 70128.11 |
| Reading On 01-APR-23 | 272594.10 | 297734.10 | | 54470.70 | 68402.83 |
| Difference ST:01 | 6908.17 | 7549.53 | | 1360.61 | 1725.28 |
| Multipling Factor | 2 | 2 | 2 | 2 | 2 |
| Total Consumption | 13816 | 15099 | 70.88 | 2721 | 3451 |
| Monthly Minimum Units | 3000 | | 120 | | |
| Main Consumption | 13006 | Colony | 0 | L&F | 0 |

| DESCRIPTIONS | RATE | KVA/UNITS | AMOUNT Rs. |
|-----------------------|----------------------------|-----------|------------|
| Demand Charges Normal | Rs. 475 | 120 | 57000.00 |
| Demand Charges Penal | Rs. 950 | 0 | 0.00 |
| Energy Charges | Ps. 880 | 13006 | 114452.80 |
| entive TOD1 | (FR: 89852.29 IR: 87815.1) | | -4074.00 |
| Incentive TOD2 | (FR: 30449.76 IR: 29735.7) | | -1428.00 |
| TOD Charges | Ps. 100 | 6172 | 6172.00 |
| Electricity Duty | Ps. 6 | 13006 | 780.36 |
| Colony Charges | Ps. 730 | 0 | 0.00 |
| L&F Charges | Ps. 880 | 0 | 0.00 |
| Green Energy Charges | Ps. 0 | 0 | 0.00 |
| FSA Charges | Ps. | | |

| | | | |
|---------------|---------|-----|-----|
| Supplier Name | Net KWH | KVA | TOD |
|---------------|---------|-----|-----|

| Net Meter (KWH) Details | | |
|-------------------------|-----------------|----------------|
| Closing Reading | Opening Reading | Recorded Units |
| 128727 | 127680.4 | 2093 |

| | |
|----------------------------|-----------|
| Sub Total | 172903.16 |
| Customer Charges | 2000.00 |
| ACD Surcharge | 0.00 |
| UI Charges | 0.00 |
| Cross Subsidy Surcharge | 0.00 |
| Additional Surcharge on OA | 0.00 |

Arrears as on 30/04/23

| | C.C.Charge | TCS on Arrears |
|----------------|------------|----------------|
| Court Case Rs. | 0 | |
| Others Rs. | 0 | 0.00 |
| Total Rs. | 0 | |

RKVAH surcharge WIND

Late Payment Charges 0.00

Interest on ED 0.28

Penal Interest

Difference Voltage Surcharge 0.00

Wheeling Charges 0.00

Transmission Charges 0.00

Other Charges-I 0.00

ICD for FY 2022-23 -24034.89

Gross Total 150869.00

Inc. Rec. from Govt. 0.00

IT TCS U/s 206C(1H) 0.00

Net Bill Amount 150869.00

Total Arrears 0.00

Total Amount Payable 150869.00

Amount in Words: One Lakh Fifty Thousand Eight Hundred and Sixty Nine Rupees Only.

Note: ACD Due for 2023-24 Rs. 0

Note: PAY YOUR BILL THROUGH THE SBI A/C NO. SPDCLPSRN1242
IFSC CODE: SBIN0004266

Payable 150869/-
S. P. P. P.
15/05/23

SOUTHERN POWER DISTRIBUTION COMPANY OF TS LIMITED

H.T C.C. Part Bill (upto 31st) for the Month of March-2023,

Date: 10-APR-2023

PAYABLE ON OR BEFORE Dated : 24-Apr-23

| | | | |
|------------------------|---------------------|-----------------|--------------------------------|
| Contracted MD (KVA/HP) | 150 | Consumer Number | SRN1242 |
| Specified Voltage(KV) | 11 | Name | M/S. AVANTHI EDUCATIONAL SOCIE |
| Actual Voltage(KV) | 11 | Address1 | SY.NO.230,GUNTAPALLY (V), |
| Feeder | 180123340204 (CF) | Address2 | PEDDA AMBERPET,HAYATHNAGAR(M), |
| Category | 2 | Address3 | R.R.DIST |

| DESCRIPTIONS | KWH | KVAH | KVA | TOD1 | TOD2 |
|----------------------|-----------|-----------|-------|----------|----------|
| Reading On 31-MAR-23 | 272594.10 | 297734.10 | 35.44 | 54470.70 | 68402.83 |
| Reading On 22-MAR-23 | 269435.20 | 294297.56 | | 53848.45 | 67647.90 |
| Difference ST:01 | 3158.9 | 3436.54 | | 622.25 | 754.93 |
| Multiplying Factor | 2 | 2 | 2 | 2 | 2 |
| Total Consumption | 6318 | 6873 | 70.88 | 1245 | 1510 |
| Minimum Units | 1000 | | 120 | | |
| Main Consumption | 5581 | Colony | 0 | L&F | 0 |

| Days : 10 | RATE | KVA/UNITS | AMOUNT Rs. |
|-----------------------|---------|-----------|------------|
| Demand Charges Normal | Rs. 475 | 40 | 19000.00 |
| Demand Charges Penal | Rs. 950 | 0 | 0.00 |
| Energy Charges | Ps. 880 | 5581 | 49112.80 |
| TOD Charges | Ps. 100 | 2755 | 2755.00 |
| Electricity Duty | Ps. 6 | 5581 | 334.86 |
| Colony Charges | Ps. 730 | 0 | 0.00 |
| L&F Charges | Ps. 880 | 0 | 0.00 |
| FSA Charges | | | 0.00 |

| | | | | |
|-------------------------|-----------------|----------------|-----|-------------------------|
| Supplier Name | Net KWH | KVA | TOD | Sub Total 71202.66 |
| | | | | Customer Charges 666.66 |
| Net Meter (KWH) Details | | | | ACD Surcharge 0.00 |
| Closing Reading | Opening Reading | Recorded Units | | UI Charges 0.00 |

127680.4

127034.6

1292

Arrears as on 31/03/23

| | C.C.Charge | Surcharge |
|------------------|-------------|-----------|
| Court Case Rs. | 0.00 | |
| Others Rs. | 0.00 | |
| Total Rs. | 0.00 | |

| | |
|-----------------------------|-----------------|
| Cross Subsidy Surcharge | 0.00 |
| Addl.SCHG OA | 0.00 |
| Late Payment Charges | 0.00 |
| Interest on ED | 0.00 |
| Incentive TOD1 | -1957.00 |
| Incentive TOD2 | -635.00 |
| Wheeling Charges | 0.00 |
| Transmission Charges | 0.00 |
| Other Charges-I | 0.00 |
| Other Charges-II | 0.00 |
| Gross Total | 69277.00 |
| Incentive Amount | |
| IT TCS U/s 206C(1H) | 0.00 |
| Other Credit Adj. | |
| Net Bill Amount | 69277.00 |
| Total Arrears | 0.00 |
| Total Amount Payable | 69277.00 |

Amount in Words: Sixty Nine Thousand Two Hundred and Seventy Seven Rupees Only.

Note: ACD Due for 2022-23 Rs. 0

Note: PAY YOUR BILL THROUGH THE SBH A/C NO. SPDCLPSRN1242
IFSC CODE: SBIN004266

Handwritten: Paid on 26/4/23
AKH-125 SL
@Y

Handwritten: Paid. S. Anurag
26/4/23

SOUTHERN POWER DISTRIBUTION COMPANY OF TS LIMITED

H.T C.C. Bill for the Month of February 2023,

Date: 26-Feb-23

PAYABLE ON OR BEFORE Dated : 12-Mar-23

DISCONNECTION DATE: 27-Mar-23

| | | | |
|------------------------|---------------------|-----------------|--------------------------------|
| Contracted MD (KVA/HP) | 150 | Consumer Number | SRN1242 |
| Specified Voltage(KV) | 11 | Name | M/S. AVANTHI EDUCATIONAL SOCIE |
| Actual Voltage(KV) | 11 | Address1 | SY.NO.230,GUNTAPALLY (V), |
| Feeder | 180123340204 (CF) | Address2 | PEDDA AMBERPET,HAYATHNAGAR(M), |
| Category | 2 | Address3 | R.R.DIST |

| DESCRIPTIONS | KWH | KVAH | KVA | TOD1 | TOD2 |
|-----------------------|-----------|-----------|-------|----------|----------|
| Reading On 22-FEB-23 | 264263.84 | 288897.96 | 30.60 | 52688.70 | 66304.35 |
| Reading On 20-JAN-23 | 258540.00 | 282971.70 | | 51187.40 | 64821.40 |
| Difference ST:01 | 5723.84 | 5926.26 | | 1501.3 | 1482.95 |
| Multiplying Factor | 2 | 2 | 2 | 2 | 2 |
| Total Consumption | 11448 | 11853 | 61.2 | 3003 | 2966 |
| Monthly Minimum Units | 3000 | | 120 | | |
| Main Consumption | 5860 | Colony | 0 | L&F | 0 |

| DESCRIPTIONS | RATE | KVA/UNITS | AMOUNT Rs. |
|-----------------------|---------------------------|-----------|------------|
| Demand Charges Normal | Rs. 475 | 120 | 57000.00 |
| Demand Charges Penal | Rs. 950 | 0 | 0.00 |
| Energy Charges | Ps. 880 | 5860 | 51568.00 |
| Incentive TOD1 | (FR: 85191.9 IR: 83392.1) | | -3600.00 |
| Incentive TOD2 | (FR: 28858.6 IR: 28256.7) | | -1204.00 |
| TOD Charges | Ps. 100 | 5969 | 5969.00 |
| Electricity Duty | Ps. 6 | 5860 | 351.60 |
| Colony Charges | Ps. 730 | 0 | 0.00 |
| L&F Charges | Ps. 880 | 0 | 0.00 |
| Green Energy Charges | Ps. 0 | 0 | 0.00 |
| FSA Charges | Ps. | | |

| Supplier Name | Net KWH | KVA | TOD |
|---------------|---------|-----|-----|
|---------------|---------|-----|-----|

Sub Total 110084.60

Customer Charges 2000.00

ACD Surcharge 0.00

UI Charges 0.00

Cross Subsidy Surcharge 0.00

Additional Surcharge on OA 0.00

RKVAH surcharge HYDEL

RKVAH surcharge WIND

Late Payment Charges 0.00

Interest on ED 0.00

Penal Interest

Difference Voltage Surcharge 0.00

Wheeling Charges 0.00

Transmission Charges 0.00

Other Charges-I 0.00

Other Charges-II 0.00

Gross Total 112085.00

Inc. Rec. from Govt. 0.00

IT TCS U/s 206C(1H) 0.00

Net Bill Amount 112085.00

Total Arrears 0.00

Total Amount Payable 112085.00

Net Meter (KWH) Details

| Closing Reading | Opening Reading | Recorded Units |
|-----------------|-----------------|----------------|
|-----------------|-----------------|----------------|

| | | |
|----------|----------|------|
| 125184.6 | 122187.9 | 5993 |
|----------|----------|------|

Arrears as on 23/02/23

| | C.C.Charge | TCS on Arrears |
|--|------------|----------------|
|--|------------|----------------|

| | | |
|----------------|---|------|
| Court Case Rs. | 0 | |
| Others Rs. | 0 | 0.00 |
| Total Rs. | 0 | |

Amount in Words: One Lakh Twelve Thousand and Eighty Five Rupees Only.

Note: ACD Due for 2022-23 Rs. 0

Note: PAY YOUR BILL THROUGH THE SBI A/C NO. SPDCLPSRN1242
IFSC CODE: SBIN0004266

*Paid on 6/2/23
Ax 4-123 Hb
@y*

SOUTHERN POWER DISTRIBUTION COMPANY OF TS LIMITED

H.T C.C. Bill for the Month of January 2023,

Date: 26-Jan-23

PAYABLE ON OR BEFORE Dated : 09-Feb-23

DISCONNECTION

DATE: 24-Feb-23

| | | | |
|------------------------|---------------------|-----------------|--------------------------------|
| Contracted MD (KVA/HP) | 150 | Consumer Number | SRN1242 |
| Specified Voltage(KV) | 11 | Name | M/S. AVANTHI EDUCATIONAL SOCIE |
| Actual Voltage(KV) | 11 | Address1 | SY.NO.230,GUNTAPALLY (V), |
| Feeder | 180123340204 (CF) | Address2 | PEDDA AMBERPET,HAYATHNAGAR(M), |
| Category | 2 | Address3 | R.R.DIST |

| DESCRIPTIONS | KWH | KVAH | KVA | TOD1 | TOD2 |
|-----------------------|-----------|-----------|-------|----------|----------|
| Reading On 20-JAN-23 | 258540.00 | 282971.70 | 28.88 | 51187.40 | 64821.40 |
| Reading On 20-DEC-22 | 253560.90 | 277775.40 | | 49952.30 | 63596.30 |
| Difference ST:01 | 4979.1 | 5196.3 | | 1235.1 | 1225.1 |
| Multiplying Factor | 2 | 2 | 2 | 2 | 2 |
| Total Consumption | 9958 | 10393 | 57.76 | 2470 | 2450 |
| Monthly Minimum Units | 3000 | | 120 | | |
| Main Consumption | 5048 | Colony | 0 | L&F | 0 |

| DESCRIPTIONS | RATE | KVA/UNITS | AMOUNT Rs. |
|-----------------------|---------------------------|-----------|------------|
| Demand Charges Normal | Rs. 475 | 120 | 57000.00 |
| Demand Charges Penal | Rs. 950 | 0 | 0.00 |
| Energy Charges | Ps. 880 | 5048 | 44422.40 |
| Incentive TOD1 | (FR: 83392.1 IR: 81851.2) | | -3082.00 |
| Incentive TOD2 | (FR: 28256.7 IR: 27769.5) | | -974.00 |
| TOD Charges | Ps. 100 | 4920 | 4920.00 |
| Electricity Duty | Ps. 6 | 5048 | 302.88 |
| Colony Charges | Ps. 730 | 0 | 0.00 |
| L&F Charges | Ps. 880 | 0 | 0.00 |
| Green Energy Charges | Ps. 0 | 0 | 0.00 |
| FSA Charges | Ps. | | |

| | | | | |
|-------------------------|---------|-----|-----|--------------------------|
| Supplier Name | Net KWH | KVA | TOD | Sub Total 102589.28 |
| | | | | Customer Charges 2000.00 |
| | | | | ACD Surcharge 0.00 |
| Net Meter (KWH) Details | | | | |

104589/-

| Closing Reading | Opening Reading | Recorded Units |
|-----------------|-----------------|----------------|
| 122187.9 | 119515.5 | 5345 |

| Arrears as on 23/01/23 | | |
|------------------------|------------|----------------|
| | C.C.Charge | TCS on Arrears |
| Court Case Rs. | 0 | |
| Others Rs. | 0 | 0.00 |
| Total Rs. | 0 | |

| | |
|------------------------------|------------------|
| UI Charges | 0.00 |
| Cross Subsidy Surcharge | 0.00 |
| Additional Surcharge on OA | 0.00 |
| RKVAH surcharge HYDEL | |
| RKVAH surcharge WIND | |
| Late Payment Charges | 0.00 |
| Interest on ED | 0.00 |
| Penal Interest | |
| Difference Voltage Surcharge | 0.00 |
| Wheeling Charges | 0.00 |
| Transmission Charges | 0.00 |
| Other Charges-I | 0.00 |
| Other Charges-II | 0.00 |
| Gross Total | 104589.00 |
| Inc. Rec. from Govt. | 0.00 |
| IT TCS U/s 206C(1H) | 0.00 |
| Net Bill Amount | 104589.00 |
| Total Arrears | 0.00 |
| Total Amount Payable | 104589.00 |

Amount in Words: One Lakh Four Thousand Five Hundred and Eighty Nine Rupees Only.

Note: ACD Due for 2022-23 Rs. 0

Note: PAY YOUR BILL THROUGH THE SBI A/C NO. SPDCLPSRN1242
IFSC CODE: SBIN0004266

Handwritten:
Paid 104589/-
5.000000
23/02/23

SOUTHERN POWER DISTRIBUTION COMPANY OF TS LIMITED

*Paid on 8/12/22
A/C 22546
WJ*

H.T C.C. Bill for the Month of November 2022,

Date: 26-Nov-22

**PAYABLE ON OR BEFORE Dated : 10-Dec-22
DATE: 25-Dec-22**

DISCONNECTION

| | | | |
|------------------------|---------------------|-----------------|--------------------------------|
| Contracted MD (KVA/HP) | 150 | Consumer Number | SRN1242 |
| Specified Voltage(KV) | 11 | Name | M/S. AVANTHI EDUCATIONAL SOCIE |
| Actual Voltage(KV) | 11 | Address1 | SY.NO.230,GUNTAPALLY (V), |
| Feeder | 180123340204 (CF) | Address2 | PEDDA AMBERPET,HAYATHNAGAR(M), |
| Category | 2 | Address3 | R.R.DIST |

| DESCRIPTIONS | KWH | KVAH | KVA | TOD1 | TOD2 |
|-----------------------|-----------|-----------|-------|----------|----------|
| Reading On 19-NOV-22 | 248229.50 | 272157.40 | 25.38 | 48712.20 | 62389.80 |
| Reading On 21-OCT-22 | 243478.40 | 267180.90 | | 47739.30 | 61203.20 |
| Difference ST:01 | 4751.1 | 4976.5 | | 972.9 | 1186.6 |
| Multiplying Factor | 2 | 2 | 2 | 2 | 2 |
| Total Consumption | 9502 | 9953 | 50.76 | 1946 | 2373 |
| Monthly Minimum Units | 3000 | | 120 | | |
| Main Consumption | 4473 | Colony | 0 | L&F | 0 |

| DESCRIPTIONS | RATE | KVA/UNITS | AMOUNT Rs. |
|-----------------------|---------------------------|-----------|------------|
| Demand Charges Normal | Rs. 475 | 120 | 57000.00 |
| Demand Charges Penal | Rs. 950 | 0 | 0.00 |
| Energy Charges | Ps. 880 | 4473 | 39362.40 |
| Incentive TOD1 | (FR: 80322.9 IR: 78762.9) | | -3120.00 |
| Incentive TOD2 | (FR: 27273.9 IR: 26772) | | -1004.00 |
| TOD Charges | Ps. 100 | 4319 | 4319.00 |
| Electricity Duty | Ps. 6 | 4473 | 268.38 |
| Colony Charges | Ps. 730 | 0 | 0.00 |
| L&F Charges | Ps. 880 | 0 | 0.00 |
| Green Energy Charges | Ps. 0 | 0 | 0.00 |
| FSA Charges | Ps. | | |

| Supplier Name | Net KWH | KVA | TOD | Sub Total | |
|---------------|---------|-----|-----|------------------|---------|
| | | | | 96825.78 | |
| | | | | Customer Charges | 2000.00 |
| | | | | ACD Surcharge | 0.00 |

Net Meter (KWH) Details

Closing Reading Opening Reading Recorded Units

117908.4 115168.3 5480

Arrears as on 23/11/22

| | C.C.Charge | TCS on Arrears |
|----------------|------------|----------------|
| Court Case Rs. | 0 | |
| Others Rs. | 0 | 0.00 |
| Total Rs. | 0 | |

UI Charges

0.00

Cross Subsidy Surcharge

0.00

Additional Surcharge on OA

0.00

RKVAH surcharge HYDEL

RKVAH surcharge WIND

Late Payment Charges

0.00

Interest on ED

1.40

Penal Interest

Difference Voltage Surcharge

0.00

Wheeling Charges

0.00

Transmission Charges

0.00

Other Charges-I

0.00

Other Charges-II

0.00

Gross Total

98827.00

Inc. Rec. from Govt.

0.00

IT TCS U/s 206C(1H)

0.00

Net Bill Amount

98827.00

Total Arrears

0.00

Total Amount Payable

98827.00

Amount in Words: Ninty Eight Thousand Eight Hundred and Twenty Seven Rupees Only.

Note: ACD Due for 2022-23 Rs. 0

Note: PAY YOUR BILL THROUGH THE SBI A/C NO. SPDCLPSRN1242
IFSC CODE: SBIN00042668920
4 123
13,393

SOUTHERN POWER DISTRIBUTION COMPANY OF TS LIMITED

H.T C.C. Bill for the Month of **October 2022,**

Date: 26-Oct-22

**PAYABLE ON OR BEFORE Dated : 09-Nov-22
24-Nov-22**

DISCONNECTION DATE:

| | | | |
|------------------------|----------------------------|-----------------|---------------------------------------|
| Contracted MD*(KVA/HP) | 150 | Consumer Number | SRN1242 |
| Specified Voltage(KV) | 11 | Name | M/S. AVANTHI EDUCATIONAL SOCIE |
| Actual Voltage(KV) | 11 | Address1 | SY.NO.230,GUNTAPALLY (V), |
| Feeder | 180123340204 (CF) | Address2 | PEDDA AMBERPET,HAYATHNAGAR(M), |
| Category | 2 | Address3 | R.R.DIST |

| DESCRIPTIONS | KWH | FR | KVA | TOD1 | TOD2 |
|-----------------------|------------------|------------------|--------------|-----------------|-----------------|
| Reading On 21-OCT-22 | 243478.40 | 267180.90 | 27.18 | 47739.30 | 61203.20 |
| Reading On 19-SEP-22 | 238224.10 | 261613.80 | | 46805.40 | 59954.50 |
| Difference ST:01 | 5254.3 | 5567.1 | | 933.9 | 1248.7 |
| Multiplying Factor | 2 | 2 | 2 | 2 | 2 |
| Total Consumption | 10509 | 11134 | 54.36 | 1868 | 2497 |
| Monthly Minimum Units | 3000 | | 120 | | |
| Main Consumption | 6540 | Colony | 0 | L&F | 0 |

| DESCRIPTIONS | RATE | KVA/UNITS | AMOUNT Rs. |
|-----------------------|----------------------------------|-------------|-----------------|
| Demand Charges Normal | Rs. 475 | 120 | 57000.00 |
| Demand Charges Penal | Rs. 950 | 0 | 0.00 |
| Energy Charges | Ps. 880 | 6540 | 57552.00 |
| Incentive TOD1 | (FR: 78762.9 IR: 77119.8) | | -3286.00 |
| Incentive TOD2 | (FR: 26772 IR: 26223.1) | | -1098.00 |
| TOD Charges | Ps. 100 | 4365 | 4365.00 |
| Electricity Duty | Ps. 6 | 6540 | 392.40 |
| Colony Charges | Ps. 730 | 0 | 0.00 |
| L&F Charges | Ps. 880 | 0 | 0.00 |
| Green Energy Charges | Ps. 0 | 0 | 0.00 |
| FSA Charges | Ps. | | |

| | | | | | |
|--------------------------------|------------------------|-----------------------|------------|-------------------------|------------------|
| Supplier Name | Net KWH | KVA | TOD | Sub Total | 114925.40 |
| | | | | Customer Charges | 2000.00 |
| | | | | ACD Surcharge | 0.00 |
| | | | | UI Charges | 0.00 |
| Net Meter (KWH) Details | | | | | |
| Closing Reading | Opening Reading | Recorded Units | | | |

| | | |
|----------|----------|------|
| 115168.3 | 112871.3 | 4594 |
|----------|----------|------|

Arrears as on 23/10/22

| | C.C.Charge | TCS on Arrears |
|------------------|------------|----------------|
| Court Case Rs. | 0 | |
| Others Rs. | 0 | 0.00 |
| Total Rs. | 0 | |

| | |
|------------------------------|------------------|
| Cross Subsidy Surcharge | 0.00 |
| Additional Surcharge on OA | 0.00 |
| RKVAH surcharge HYDEL | |
| RKVAH surcharge WIND | |
| Late Payment Charges | 0.00 |
| Interest on ED | 0.00 |
| Penal Interest | |
| Difference Voltage Surcharge | 0.00 |
| Wheeling Charges | 0.00 |
| Transmission Charges | 0.00 |
| Other Charges-I | 0.00 |
| Other Charges-II | 0.00 |
| Gross Total | 116925.00 |
| Inc. Rec. from Govt. | 0.00 |
| IT TCS U/s 206C(1H) | 0.00 |
| Net Bill Amount | 116925.00 |
| Total Arrears | 0.00 |
| Total Amount Payable | 116925.00 |

Amount in Words: One Lakh Sixteen Thousand Nine Hundred and Twenty Five Rupees Only.

Note: ACD Due for 2022-23 Rs. 0

Note: PAY YOUR BILL THROUGH THE SBI A/C NO. SPDCLPSRN1242
IFSC CODE: SBIN0004266

SOUTHERN POWER DISTRIBUTION COMPANY OF TS LIMITED

H.T C.C. Bill for the Month of September 2022,

Date: 26-Sep-22

**PAYABLE ON OR BEFORE Dated : 10-Oct-22
Oct-22**

DISCONNECTION DATE: 25-

| | | | |
|-------------------------|---------------------|-----------------|--------------------------------|
| Contracted MD (KVA/HP): | 150 | Consumer Number | SRN1242 |
| Specified Voltage(KV) | 11 | Name | M/S. AVANTHI EDUCATIONAL SOCIE |
| Actual Voltage(KV) | 11 | Address1 | SY.NO.230,GUNTAPALLY (V), |
| Feeder | 180123340204 (CF) | Address2 | PEDDA AMBERPET,HAYATHNAGAR(M), |
| Category | 2 | Address3 | R.R.DIST |

| DESCRIPTIONS | KWH | Reading | KVA | TOD1 | TOD2 |
|-----------------------|-----------|-----------|-------|----------|----------|
| Reading On 19-SEP-22 | 238224.10 | 261613.80 | 35.74 | 46805.40 | 59954.50 |
| Reading On 19-AUG-22 | 232091.80 | 255141.80 | | 45728.80 | 58398.10 |
| Difference ST:01 | 6132.3 | 6472 | | 1076.6 | 1556.4 |
| Multiplying Factor | 2 | 2 | 2 | 2 | 2 |
| Total Consumption | 12265 | 12944 | 71.48 | 2153 | 3113 |
| Monthly Minimum Units | 3000 | | 120 | | |
| Main Consumption | 8864 | Colony | 0 | L&F | 0 |

| DESCRIPTIONS | RATE | KVA/UNITS | AMOUNT Rs. |
|-----------------------|---------------------------|-----------|------------|
| Demand Charges Normal | Rs. 475 | 120 | 57000.00 |
| Demand Charges Penal | Rs. 950 | 0 | 0.00 |
| Energy Charges | Ps. 880 | 8864 | 78003.20 |
| Incentive TOD1 | (FR: 77119.8 IR: 75115) | | -4010.00 |
| Incentive TOD2 | (FR: 26223.1 IR: 25540.1) | | -1366.00 |
| TOD Charges | Ps. 100 | 5266 | 5266.00 |
| Electricity Duty | Ps. 6 | 8864 | 531.84 |
| Colony Charges | Ps. 730 | 0 | 0.00 |
| L&F Charges | Ps. 880 | 0 | 0.00 |
| Green Energy Charges | Ps. 0 | 0 | 0.00 |
| FSA Charges | Ps. | | |

| | | | | | |
|---------------|---------|-----|-----|----------------------------|-----------|
| Supplier Name | Net KWH | KVA | TOD | Sub Total | 135425.04 |
| | | | | Customer Charges | 2000.00 |
| | | | | ACD Surcharge | 0.00 |
| | | | | UI Charges | 0.00 |
| | | | | Cross Subsidy Surcharge | 0.00 |
| | | | | Additional Surcharge on OA | 0.00 |

| Net Meter (KWH) Details | | |
|-------------------------|-----------------|----------------|
| Closing Reading | Opening Reading | Recorded Units |
| 112871.3 | 110831.5 | 4080 |

Arrears as on 23/09/22

| | C.C.Charge | TCS on Arrears |
|----------------|------------|----------------|
| Court Case Rs. | 0 | |
| Others Rs. | 0 | 0.00 |
| Total Rs. | 0 | |

RKVAH surcharge HYDEL

RKVAH surcharge WIND

| | |
|------------------------------|-----------|
| Late Payment Charges | 0.00 |
| Interest on ED | 6.07 |
| Penal Interest | |
| Difference Voltage Surcharge | 0.00 |
| Wheeling Charges | 0.00 |
| Transmission Charges | 0.00 |
| Other Charges-I | 0.00 |
| Other Charges-II | 0.00 |
| Gross Total | 137431.00 |
| Inc. Rec. from Govt. | 0.00 |
| IT TCS U/s 206C(1H) | 0.00 |
| Net Bill Amount | 137431.00 |
| Total Arrears | 0.00 |
| Total Amount Payable | 137431.00 |

Amount in Words: One Lakh Thirty Seven Thousand Four Hundred and Thirty One Rupees Only.

Note: ACD Due for 2022-23 Rs. 0

Note: PAY YOUR BILL THROUGH THE SBI A/C NO. SPDCLPSRN1242
IFSC CODE: SBIN0004266

SOUTHERN POWER DISTRIBUTION COMPANY OF TS LIMITED

H.T C.C. Bill for the Month of August 2022,

Date: 26-Aug-22

PAYABLE ON OR BEFORE Dated : 09-Sep-22

DISCONNECTION

DATE: 24-Sep-22

| | | | |
|------------------------|---------------------|-----------------|--------------------------------|
| Contracted MD (KVA/HP) | 150 | Consumer Number | SRN1242 |
| Specified Voltage(KV) | 11 | Name | M/S. AVANTHI EDUCATIONAL SOCIE |
| Actual Voltage(KV) | 11 | Address1 | SY.NO.230,GUNTAPALLY (V), |
| Feeder | 180123340204 (CF) | Address2 | PEDDA AMBERPET,HAYATHNAGAR(M), |
| Category | 2 | Address3 | R.R.DIST |

| DESCRIPTIONS | KWH | KVAH | KVA | TOD1 | TOD2 |
|-----------------------|-----------|-----------|-------|----------|----------|
| Reading On 19-AUG-22 | 232091.80 | 255141.80 | 37.78 | 45728.80 | 58398.10 |
| Reading On 20-JUL-22 | 225895.40 | 248433.60 | | 44484.10 | 56965.20 |
| Difference ST:01 | 6196.4 | 6708.2 | | 1244.7 | 1432.9 |
| Multiplying Factor | 2 | 2 | 2 | 2 | 2 |
| Total Consumption | 12393 | 13416 | 75.56 | 2489 | 2866 |
| Monthly Minimum Units | 3000 | | 120 | | |
| Main Consumption | 11356 | Colony | 0 | L&F | 0 |

| DESCRIPTIONS | RATE | KVA/UNITS | AMOUNT Rs. |
|-----------------------|---------------------------|-----------|------------|
| Demand Charges Normal | Rs. 475 | 120 | 57000.00 |
| Demand Charges Penal | Rs. 950 | 0 | 0.00 |
| Energy Charges | Ps. 880 | 11356 | 99932.80 |
| Incentive TOD1 | (FR: 75115 IR: 73333.1) | | -3564.00 |
| Incentive TOD2 | (FR: 25540.1 IR: 24948.7) | | -1183.00 |
| TOD Charges | Ps. 100 | 5355 | 5355.00 |
| Electricity Duty | Ps. 6 | 11356 | 681.36 |
| Colony Charges | Ps. 730 | 0 | 0.00 |
| L&F Charges | Ps. 880 | 0 | 0.00 |
| FSA Charges | Ps. | | |

| | | | | | |
|--|---------|-----|-----|--------------------------------|-----------|
| Supplier Name | Net KWH | KVA | TOD | Sub Total | 158222.16 |
| | | | | Customer Charges | 2000.00 |
| Net Meter (KWH) Details | | | | ACD Surcharge | 0.00 |
| Closing Reading Opening Reading Recorded Units | | | | UI Charges | 0.00 |
| | | | | Cross Subsidy Surcharge | 0.00 |

110831.5

109801.6

2060

Arrears as on 23/08/22

| | C.C.Charge | TCS on Arrears |
|------------------|------------|----------------|
| Court Case Rs. | 0 | |
| Others Rs. | 0 | 0.00 |
| Total Rs. | 0 | |

| | |
|------------------------------|------------------|
| Additional Surcharge on OA | 0.00 |
| RKVAH surcharge HYDEL | |
| RKVAH surcharge WIND | |
| Late Payment Charges | 0.00 |
| Interest on ED | 1.01 |
| Penal Interest | |
| Difference Voltage Surcharge | 0.00 |
| Wheeling Charges | 0.00 |
| Transmission Charges | 0.00 |
| Other Charges-I | 0.00 |
| Other Charges-II | 0.00 |
| Gross Total | 160223.00 |
| Inc. Rec. from Govt. | 0.00 |
| IT TCS U/s 206C(1H) | 0.00 |
| Net Bill Amount | 160223.00 |
| Total Arrears | 0.00 |
| Total Amount Payable | 160223.00 |

Amount in Words: One Lakh Sixty Thousand Two Hundred and Twenty Three Rupees Only.

Note: ACD Due for 2022-23 Rs. 0

Note: PAY YOUR BILL THROUGH THE SBI A/C NO. SPDCLPSRN1242
IFSC CODE: SBIN0004266

SOUTHERN POWER DISTRIBUTION COMPANY OF TS LIMITED

H.T C.C. Bill for the Month of July 2022,

Date: 26-Jul-22

PAYABLE ON OR BEFORE Date: 09-Aug-22
DATE: 24-Aug-22

DISCONNECTION

| | | | |
|------------------------|---------------------|-----------------|--------------------------------|
| Contracted MD (KVA/HP) | 150 | Contract Number | SRN1242 |
| Specified Voltage(KV) | 11 | Name | M/S. AVANTHI EDUCATIONAL SOCIE |
| Actual Voltage(KV) | 11 | Address | SY.NO.230,GUNTAPALLY (V), |
| Feeder | 180123340204 (CF) | Area | PEDDA AMBERPET,HAYATHNAGAR(M), |
| Category | 2 | Area | R.R.DIST |

| DESCRIPTIONS | KWH | | KVA | TOD1 | TOD2 |
|-----------------------|-----------|-----------|-------|----------|----------|
| Reading On 20-JUL-22 | 225895.40 | 248433.60 | 32.76 | 44484.10 | 56965.20 |
| Reading On 20-JUN-22 | 220277.20 | 242344.20 | | 43344.70 | 55627.10 |
| Difference ST:01 | 5618.2 | 6039.4 | | 1139.4 | 1338.1 |
| Multiplying Factor | 2 | 2 | 2 | 2 | 2 |
| Total Consumption | 11236 | 12179 | 65.52 | 2279 | 2676 |
| Monthly Minimum Units | 3000 | | 120 | | |
| Main Consumption | 10251 | Colony | 0 | L&F | 0 |

| DESCRIPTIONS | RATE | KVA/UNITS | AMOUNT Rs. |
|-----------------------|---------------------------|-----------|------------|
| Demand Charges Normal | Rs. 475 | 120 | 57000.00 |
| Demand Charges Penal | Rs. 950 | 0 | 0.00 |
| Energy Charges | Ps. 880 | 10251 | 90208.80 |
| Incentive TOD1 | (FR: 73333.1 IR: 71642.7) | | -3381.00 |
| Incentive TOD2 | (FR: 24948.7 IR: 24368.3) | | -1161.00 |
| TOD Charges | Ps. 100 | 4955 | 4955.00 |
| Electricity Duty | Ps. 6 | 10251 | 615.06 |
| Colony Charges | Ps. 730 | 0 | 0.00 |
| L&F Charges | Ps. 880 | 0 | 0.00 |
| FSA Charges | Ps. | | |

| | | | |
|---------------|---------|-----|-----|
| Supplier Name | Net KWH | KVA | TOD |
|---------------|---------|-----|-----|

| |
|-------------------------|
| Net Meter (KWH) Details |
|-------------------------|

| | |
|------------------|-----------|
| Sub Total | 148236.86 |
| Customer Charges | 2000.00 |
| ACD Surcharge | 0.00 |
| UI Charges | 0.00 |

Closing Reading Opening Reading Recorded Units

109801.6 108837.6 1928

Arrears as on 23/07/22

| | C.C.Charge | TCS on Arrears |
|----------------|------------|----------------|
| Court Case Rs. | 0 | |
| Others Rs. | 0 | 0.00 |
| Total Rs. | 0 | |

| | |
|------------------------------|-----------|
| Cross Subsidy Surcharge | 0.00 |
| Additional Surcharge on OA | 0.00 |
| RKVAH surcharge HYDEL | |
| RKVAH surcharge WIND | |
| Late Payment Charges | 0.00 |
| Interest on ED | 2.25 |
| Penal Interest | |
| Difference Voltage Surcharge | 0.00 |
| Wheeling Charges | 0.00 |
| Transmission Charges | 0.00 |
| Other Charges-I | 0.00 |
| Other Charges-II | 0.00 |
| Gross Total | 150239.00 |
| Inc. Rec. from Govt. | 0.00 |
| IT TCS U/s 206C(1H) | 0.00 |
| Net Bill Amount | 150239.00 |
| Total Arrears | 0.00 |
| Total Amount Payable | 150239.00 |

Amount in Words: One Lakh Fifty Thousand Two Hundred and Thirty Nine Rupees Only.

Note: ACD Due for 2022-23 Rs. 0

Note: PAY YOUR BILL THROUGH THE SBI A/C NO. SBIN004266
IFSC CODE: SBIN004266